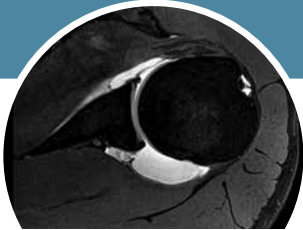


Arthrography

IMAGE-GUIDED INJECTIONS TO DIAGNOSE JOINT PAIN



When your patients have joint pain, they want relief.

While non-contrast MRI exams can diagnose many types of pathology, there are several joint-specific conditions where the presence of contrast injected during an arthrogram may aid in the evaluation of joint disorders.

Clinical indications where arthrography may aid in detection/characterization of internal derangement:

KNEE

- Post-op meniscal repair
- Characterization of osteochondral lesions

HIP

- Femoroacetabular impingement
- Post-op labral surgery
- Suspected labral tear

WRIST

- Ulnar-sided wrist pain
- Dissociation of the proximal carpal row on X-ray

ELBOW

- Medial elbow pain in the throwing athlete
- Characterization of osteochondral lesions

SHOULDER

- Pain with overhand motion (throwing)
- Instability
- Suspected small or incomplete rotator cuff tears
- Post-op rotator cuff repair
- Post-op labral repair



MR Arthrogram hip demonstrating labral tear



MR Arthrogram shoulder demonstrating labral tear with associated hyaline cartilage lesion



**SCHEDULE
A PATIENT**

online [insideCDI.com](https://www.insidecdi.com)
email TXimagingorders@cdi-rad.com

**DESOTO
MANSFIELD**
call 214.420.5400

**MCKINNEY
PLANO (INDEPENDENCE)
PLANO (LEGACY)
RICHARDSON**
call 972.920.0120

[myCDI.com](https://www.myCDI.com)

Contraindications:

Relative contraindications, including joint infections, should be discussed with the radiologist.

The radiologists are available to consult with you on a patient-by-patient basis to determine if an image-guided injection procedure is appropriate.

