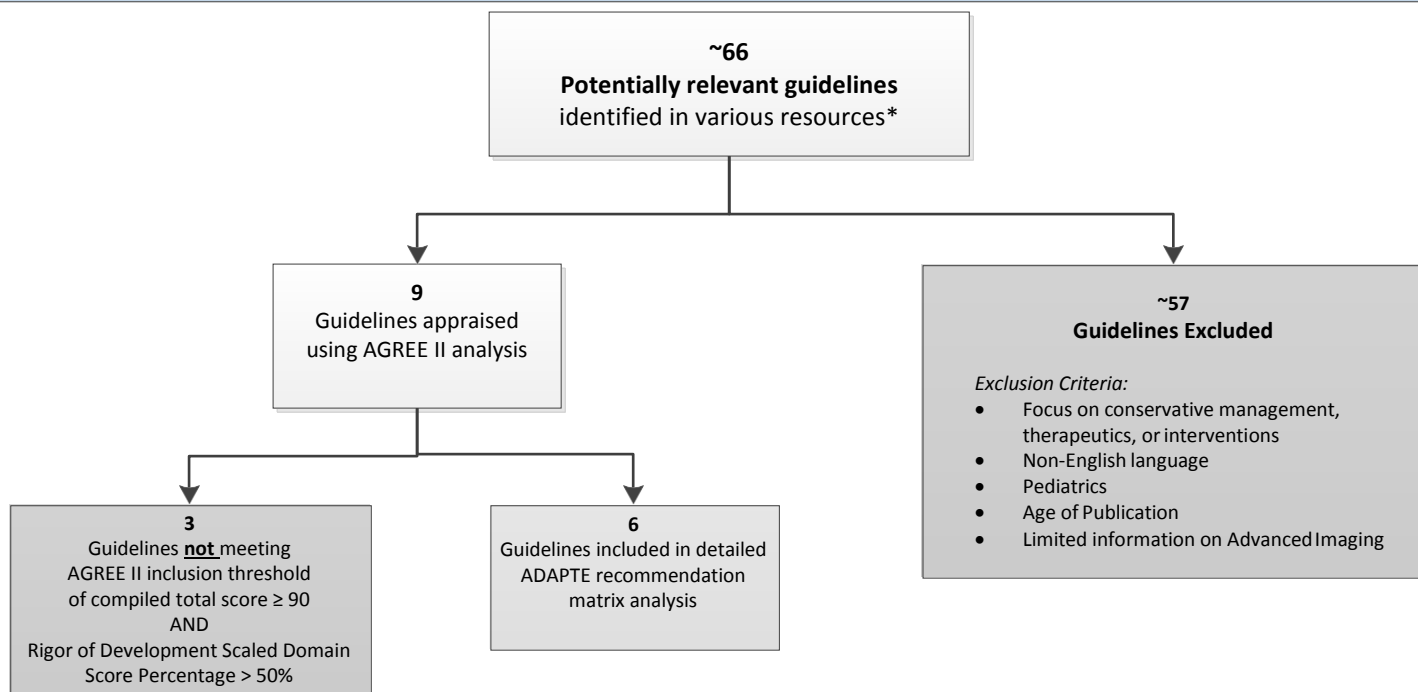
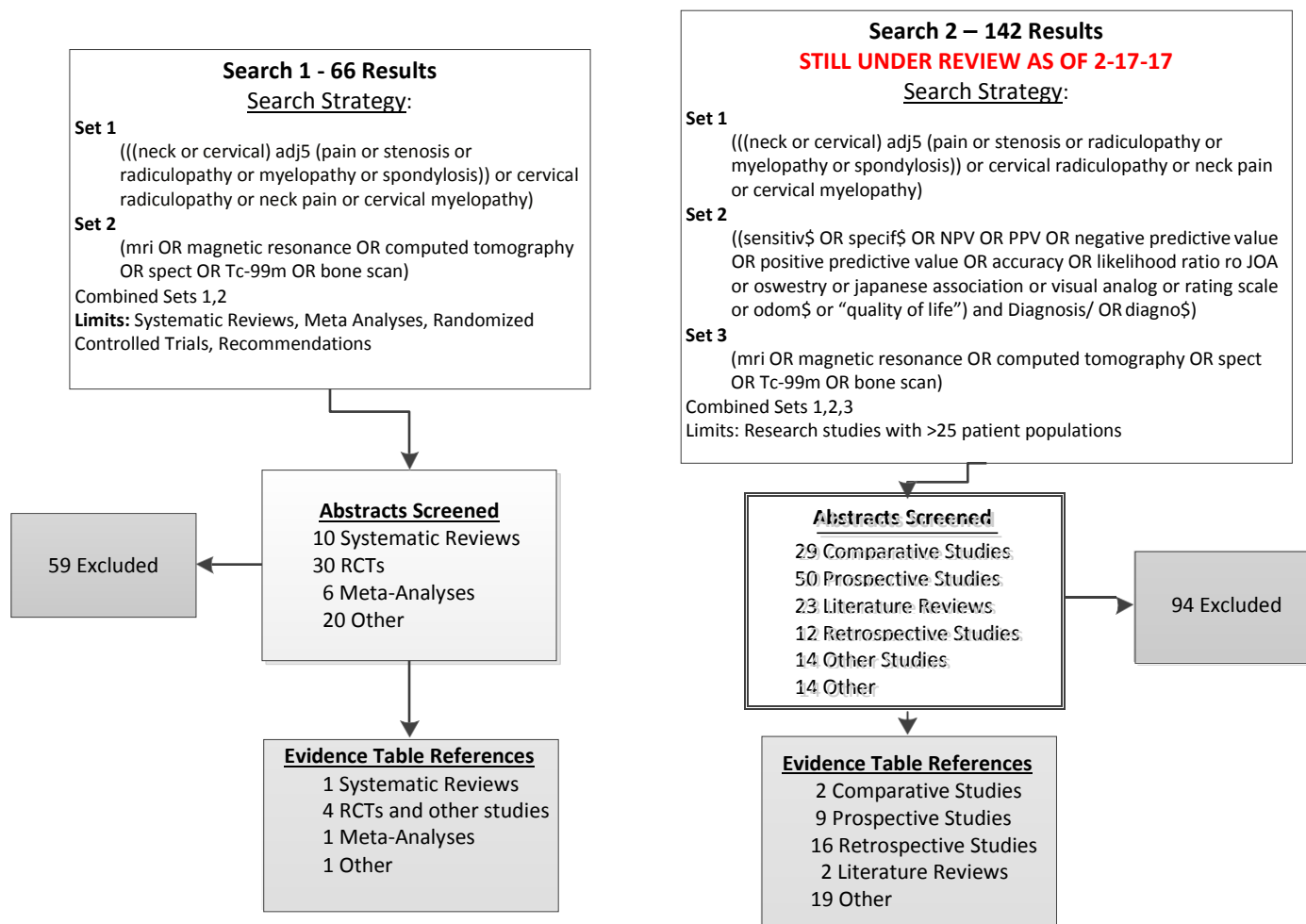


Guideline Review using ADAPTE method and AGREE II instrument



Systematic Literature Research – Ovid EMBase and Medline Databases (1/1/2007 – 1/31/2017)



*Information Resources:

Ovid EMBase and Medline, NCBI PubMed, National Guideline Clearinghouse, Guidelines International Network, Cochrane Database, Agency for Healthcare Research and Quality, and numerous specialty society websites
Additional Internet and bibliographic searches were performed for all phases of research

Systematic Literature Research – Ovid Medline and PubMed Databases, 2017-January 2018

January 2018 Search

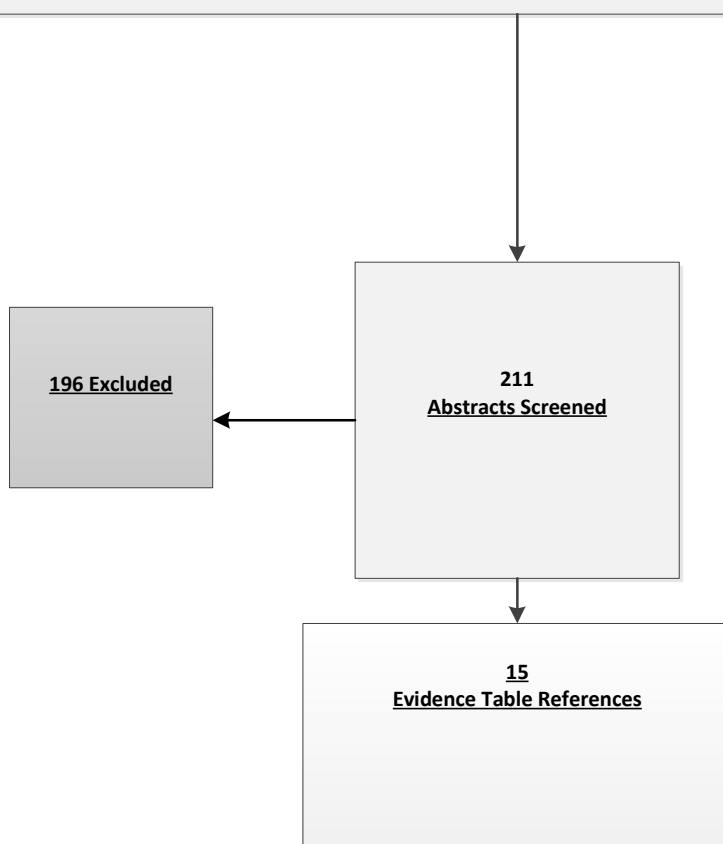
Low Back Pain Search strategy:

1. (CT or CTA or computed tomography or computed tomography arthrogra* or MRI or MRA or magnetic resonance or magnetic resonance arthrogra* or bone scan or bone scintigraphy or HDP or MDP or 99mTc or PET CT or PET or SPECT or imaging).mp.
2. low back pain.mp. or low back Pain/
3. ((neck or cervical) adj5 (pain or radiculopathy or myelopathy)).mp.
4. cervical radiculopathy.mp. or Radiculopathy/
5. 2 or 3 or 4
6. 1 and 5
7. Limit 6 to (English language and humans and yr="2017-Current")

293 results; 150 from PubMed.

303 after duplicates removed; 275 after duplicates from Neck pain were removed.

211 after case reports removed.



***Information Resources:**

Ovid EmBase and Medline, NCBI PubMed, National Guideline Clearinghouse, Guidelines International Network, TRIP Database, Choosing Wisely, Cochrane Database, Agency for Healthcare Research and Quality, and numerous specialty society websites
Additional Internet and bibliographic searches were performed for all phases of research

For use only in connection with development of AUC by the CDI Quality Institute's Multidisciplinary Committee

Systematic Literature Research – Ovid Medline and PubMed Databases, 2017-January 2018

January 2018 Search

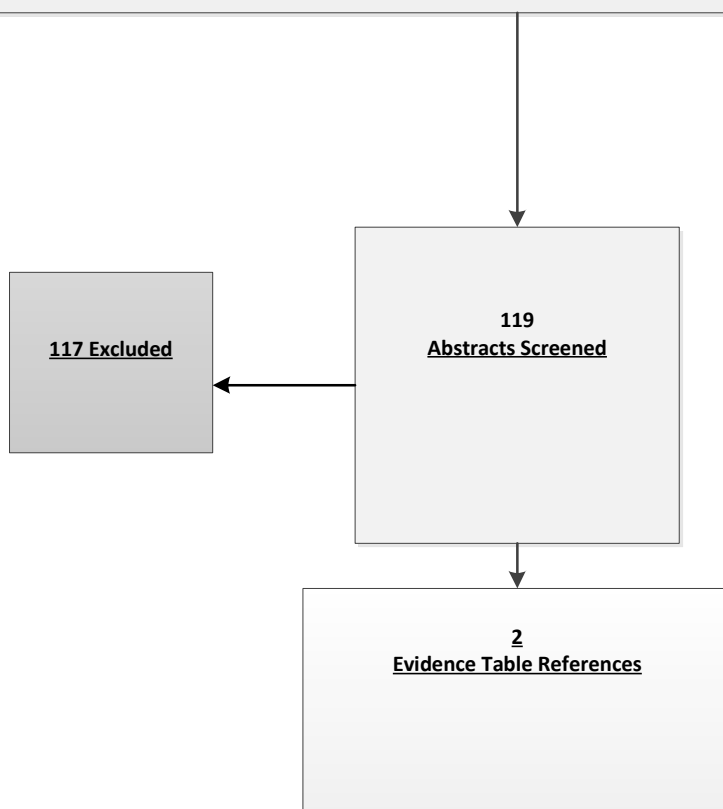
Neck Pain Search strategy:

1. (CT or CTA or computed tomography or computed tomography arthrogra* or MRI or MRA or magnetic resonance or magnetic resonance arthrogra* or bone scan or bone scintigraphy or HDP or MDP or 99mTc or PET CT or PET or SPECT or imaging).mp.
2. neck pain.mp. or Neck Pain/
3. ((neck or cervical) adj5 (pain or radiculopathy or myelopathy)).mp.
4. cervical radiculopathy.mp. or Radiculopathy/
5. 2 or 3 or 4
6. 1 and 5
7. Limit 6 to (English language and humans and yr="2017-Current")

209 results from Ovid. 127 from PubMed.

186 after duplicates removed

119 after case reports removed.



***Information Resources:**

Ovid EmBase and Medline, NCBI PubMed, National Guideline Clearinghouse, Guidelines International Network, TRIP Database, Choosing Wisely, Cochrane Database, Agency for Healthcare Research and Quality, and numerous specialty society websites
Additional Internet and bibliographic searches were performed for all phases of research

For use only in connection with development of AUC by the CDI Quality Institute's Multidisciplinary Committee

Systematic Literature Research – Ovid Medline, 1980-2/21/2018

Lumbar fusion search strategy:

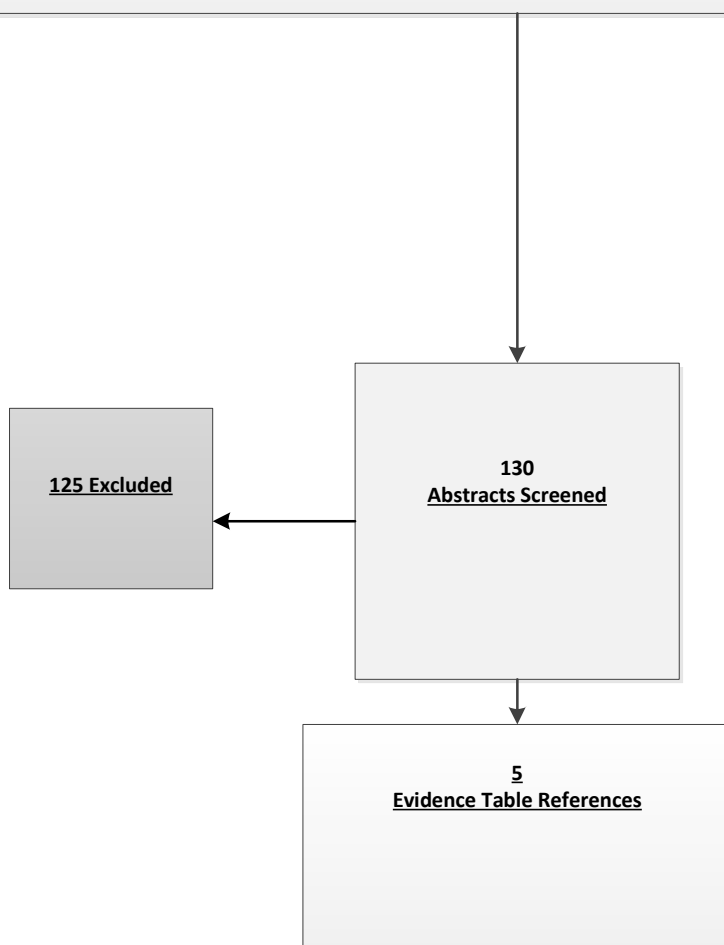
((low or lumbar or lumbral) adj3 (back or spine) adj5 (fusion or fuse or fused)) OR (Spinal Fusion) OR lumbar fusion
(CT or computed tomography or cta)) AND ((mri or mra or magnetic resonance) OR (radiograph* or x-ray or radiography))

AND

Ovid Diagnostic Accuracy search sets

Exclusions: Case reports, Non-English

Inclusions: Human, Adult



***Information Resources:**

Ovid EmBase and Medline, NCBI PubMed, National Guideline Clearinghouse, Guidelines International Network, TRIP Database, Choosing Wisely, Cochrane Database, Agency for Healthcare Research and Quality, and numerous specialty society websites
Additional Internet and bibliographic searches were performed for all phases of research

Systematic Literature Research – Ovid Medline, 1980 – 2/21/2018

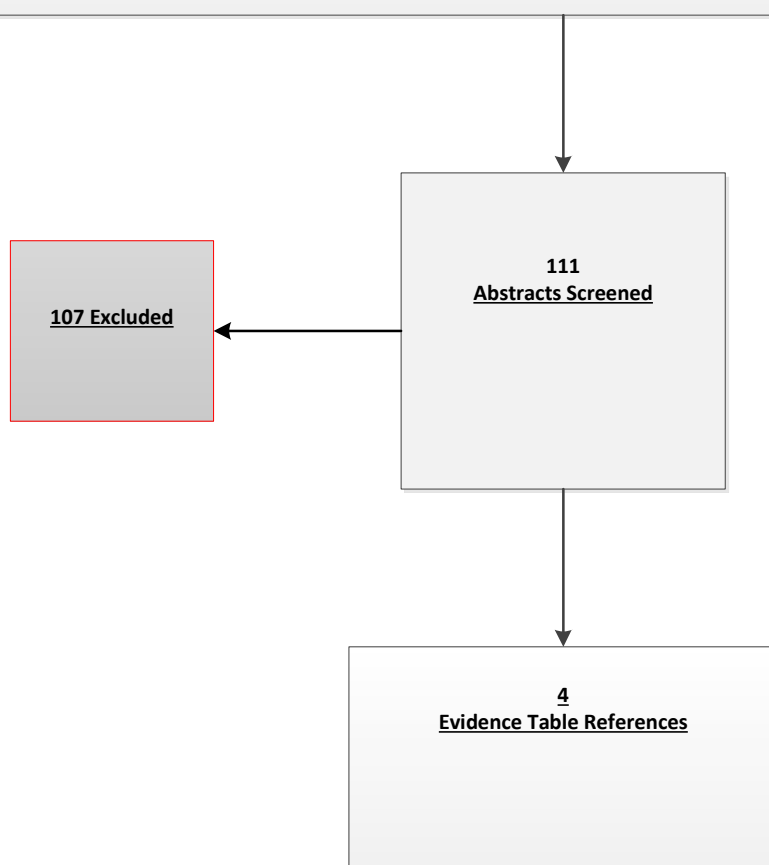
Cervical fusion search strategy:

((neck or cervical) adj5 (fusion or fuse or fused)) OR ((neck or cervical) AND (Spinal Fusion) OR cervical fusion)
(CT or computed tomography or cta)) AND ((mri or mra or magnetic resonance) OR (radiograph* or x-ray or radiography))
AND

Ovid Diagnostic Accuracy search sets

Exclusions: Case reports, Non-English

Inclusions: Human, Adult



***Information Resources:**

Ovid EmBase and Medline, NCBI PubMed, National Guideline Clearinghouse, Guidelines International Network, TRIP Database, Choosing Wisely, Cochrane Database, Agency for Healthcare Research and Quality, and numerous specialty society websites
Additional Internet and bibliographic searches were performed for all phases of research

For use only in connection with development of AUC by the CDI Quality Institute's Multidisciplinary Committee